



ROLLS-ROYCE

ENTHUSIASTS' CLUB

**NORTH EASTERN SECTION
NEWSLETTER**

January 2023



Rogers Ramblings

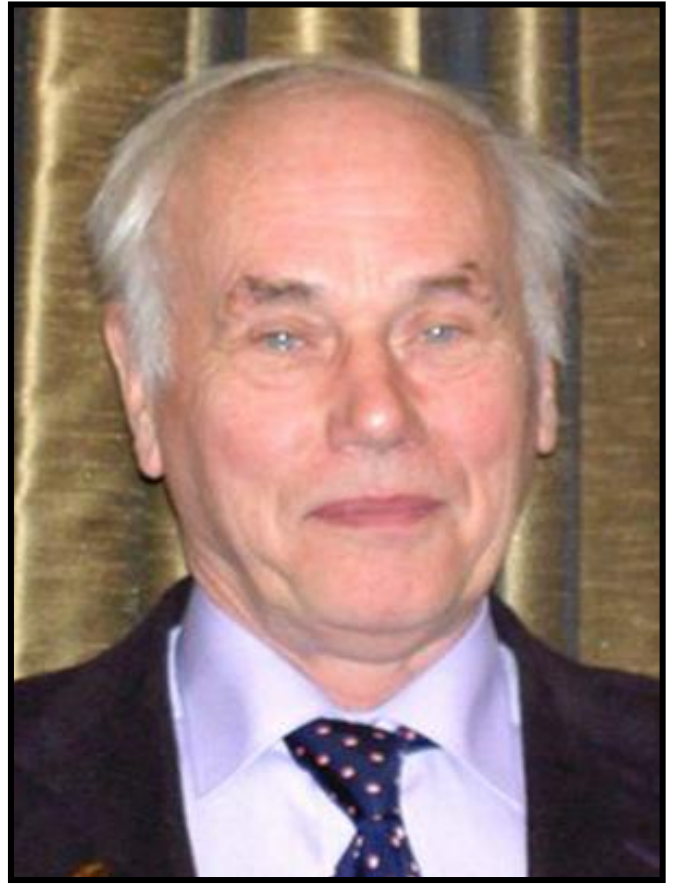
Around this time of year, I try to find time for maintenance on the Rolls (185RY) this year the track rod is being attended to for the first time since the car was built 88 years ago.

This makes me think we are only temporary custodians of mechanical artifacts.

Jan and I wish you all a happy and healthy new year!

Roger.

January 2023.



**Happy Christmas and
have a healthy New
Year**

Margaret Blacklock presenting Ian Hick with his 50 year membership badge at the Northern Rally held at Harewood House.



Front Cover Picture: Margaret and Ian.



Rolls-Royce & Bentley Specialists

Service * Repairs * Electrics * Air Conditioning
Rolls-Royce Trained Staff * Quality Workmanship
Competitive Rates * Delivery & Collection

Member of Institute of Motor Industry

Tel: **0191 276 5588**

Fearon

Mobile: 07973 381 888
Fax: 0191 276 6992
Foundry Lane, Ouseburn
Newcastle upon Tyne

DATES FOR YOUR DIARY

Noggin and Natter evenings are held on the third Wednesday of the month from 7.30pm at **The Old Mill, Metal Bridge, Coxhoe, DH6 5NX**. The venue provides an excellent food and drinks menu for the connoisseur, but if Fish & Chips, Mushy Peas and a pint of Guinness are your thing, then you definitely will not be disappointed. Much lively banter takes place during the evening especially when Jim Clark puts his 'Boysie's' hat on. The conversation is definitely not just about cars, all sorts of subjects come up in the conversation from



16 Section members attending the Old Mill

'Einstein's Theory of Relativity' to the cheapest 'Bottle of Plonk' at the local supermarket. We have a hardcore of attendees but new faces are always welcome, so come along and join us, you're heard the saying "the More the Merrier". Please just turn up, there's no need to book, order your food and drink at the bar and ask where we are and the bar staff will point you in the right direction. You never know, you may find where to obtain a cheapest bottle of Shiraz or Pinot Grigio in the North East!!!!

For the latest information, please visit the Section Website by either logging into the RREC's Website at <https://rrec.org.uk> and select from the menu bar, Worldwide Sections. Scroll down the page and click North Eastern [7] to open our Section Website Home Page in your browser. Select Future Events in the menu bar open the events page. Alternately, Google rrec-northeast, and open the home page from: <http://rrec-northeast.org.uk>

ROLLS-ROYCE ENTHUSIASTS' CLUB - NORTH EASTERN SECTION EVENTS PROGRAMME FOR 2023/4

22 nd January 23	2022 AGM – Solberge Hall – RM.
02 nd April 23	Queens Head—Drive and Dine. TBC.—JC.
30 th April 23	Wynyard—Northern Bygone Society— AF
07 th May 23	Hurworth Grange.(£3 charity charge) — AF
14 th May 23	Busby Hall with Yorkshire section (£5 cover charge for food & drink) — AF
17 th June 23 (Saturday)	Stokesley show— AF
02 nd July 23	Kipling Hall— John Harrison
09 th July 23	Witton Castle— JH
16 th July 23	Newby Hall NECWA— NECPWA
12 th August 23 (Saturday)	Ingleby—Arnccliffe Show— AF
24 th September 23	Beamish— NECPWA
29 th September 23	Wynyard— Northern Bygone Society— AF
13 th December 23	Christmas Event— Old Mill Inn— RM
21 st January 24	Section AGM— Solberge Hall— RM

The Spectre is the new all electric car made by Rolls-Royce.



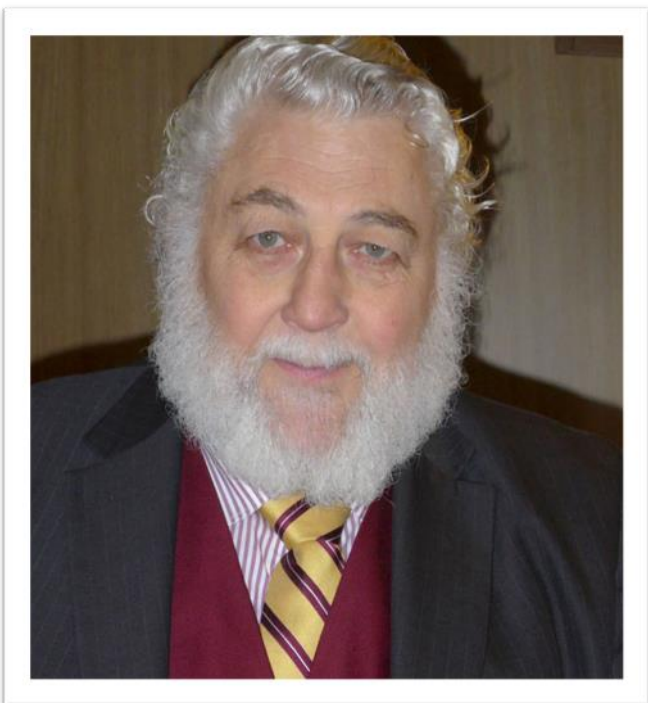
Before making his own cars, Royce an electrical engineer, made motors for electrical cars. Rolls himself said in 1900, “The electric car is perfectly noiseless and clean, there is no smell or vibration”. He also added that presently, there are infrastructure concerns, (motor and battery efficiencies).



This coupe has a fantastic interior.

The car is a: 5-metre long, 2-metre-wide coupe, sitting on 23-inch wheels. Yes, a very big car, but the Spectre boasts an impressive drag coefficient of 0.25, this may be the reason why Rolls-Royce is promising more than 310-mile range for this 2.9-tonne monster. The price for the car sits somewhere between Cullinan and Phantom, the upper end of £300k. Then of course you have to pay extra for your spec.





CONTACT POINT COMMENTS

Another year draws to a close but far from being a Christmas of goodwill and cheer to all men it is, after a year of political upheaval, a winter of discontent, trouble and strife, with an end game to resolve numerous strikes yet to be brought to a conclusion.

The year was one of promise after the ending of the Covid Pandemic restrictions but proved to be fairly quiet with low attendance at functions that did take place and with some cancellations.

This prompted a question earlier this year in this column asking Section Members what activities they would support which generated just one reply suggesting more drive and dine events. Sunday appears to be the favoured day for activity but poses a problem for dining as establishments with regular clientele claim not to have the capacity to also take one-off groups. The Queens Head flexed their capacity to accommodate us last year and the plan is to repeat the experience this April.

Our most recent event was Christmas at the Old Mill where 34 attendees enjoyed excellent food in terms of both quality and quantity as reported elsewhere and our next Event is our AGM at Solberge Hall in January.

Two members of the current Committee are standing down at the AGM. Derek Moss after around 26 years on the Committee serving as both Chairman for some years and more recently as Section President. Nick Clark stands down after three years of service. I thank them both for their contributions to the Section both personally and on behalf of the Section Members.

Six members of the current Committee are standing for re-election at the AGM which leaves up to four vacancies and nominations are being sought and will be welcomed.

So, onward and upward to 2023, a year that I trust will prove to be a happy New Year which is active and enjoyable for everybody.

Rod MacLeod. January 2023



1 Wheel nuts that is.



2 Can you tell the car they came from?

Here we have 12 Rolls-Royce wheel centres.

Can you tell the car they came from?

Answers on page 17.

Try not to use the below clue.



3



4



5



6

If you need a clue, here are the following cars:

Early Ghost
Late Ghost.
Springfield Ghost
PI
PII
PIII
20HP
20/25
25/30
Wraith
Silver Wraith
Cloud.

7



8



9



10



11



12





September 11th-15th Autumn Break at Solberge Hall Hotel, North Yorkshire.

RA repeated from last year's event, after many members asked to do it again. Jim Clark took up the challenge to organise this year's Autumn Break with different routes on Monday and Tuesday, organised by Roger and Janice Hall that took us through some very nice country side in North Yorkshire.





Wednesdays' drive was a copy of last years run over the Butter Tubs in the Yorkshire Dales, with a transit stop in wonderful village of Reeth. This route is known for its sheer beauty and well worth repeating.

We had the pleasure of Andrew & Sue Doughty company who travelled all the way from Kent again this year, they certainly know a good rally is worth the long trip! We also had the pleasure of Bob Roberts from NSW Australia joining us on his tour of the UK. Unfortunately, his Rolls 20HP failed to proceed with clutch trouble and his car had to be left in the south of England for repairs. As luck would have it, Bob had purchased a classic Daimler to take back to Australia so his car took his 20hp's place on the rally. The weather stayed fine and Solberge Hall did their utmost best in keeping us well fed and watered. We had a great magician, Andy Larmouth, entertaining us on the Monday evening, a quiz was held on Tuesday and to round it off the superb Paula Marie, 'The Vintage Vocalist', had us all singing and dancing on Wednesday, the final night.





Lalique dragonfly on the grill of this prize-winning Rolls-Royce at the Classic Motor Show, NEC Birmingham Saturday November 12th.

NEC. 12th. November.

Pictures by

DAVID



A very good example of a Silver Shadow II on the RREC stand.



In front of a splendid Indian motorcycle a very futuristic looking cycle.



Heritage Classics

OF TEESSIDE



With over 15 years experience in restoring classic and vintage cars to the very highest standards, from minor body repairs to complete body restorations, or manufacture to your design and specification.

Using traditional coach building techniques and the very best quality materials associated with the style and individual make up of every car.

Heritage Classics

3C Bowes Road · Riverside Park Ind. Estate · Middlesbrough · TS2 1LU

Tel: 01642 252040

Website: <http://www.heritageclassics-teesside.co.uk>

Email: enquiries@heritageclassics-teesside.co.uk heritageclassics@email.msn.com



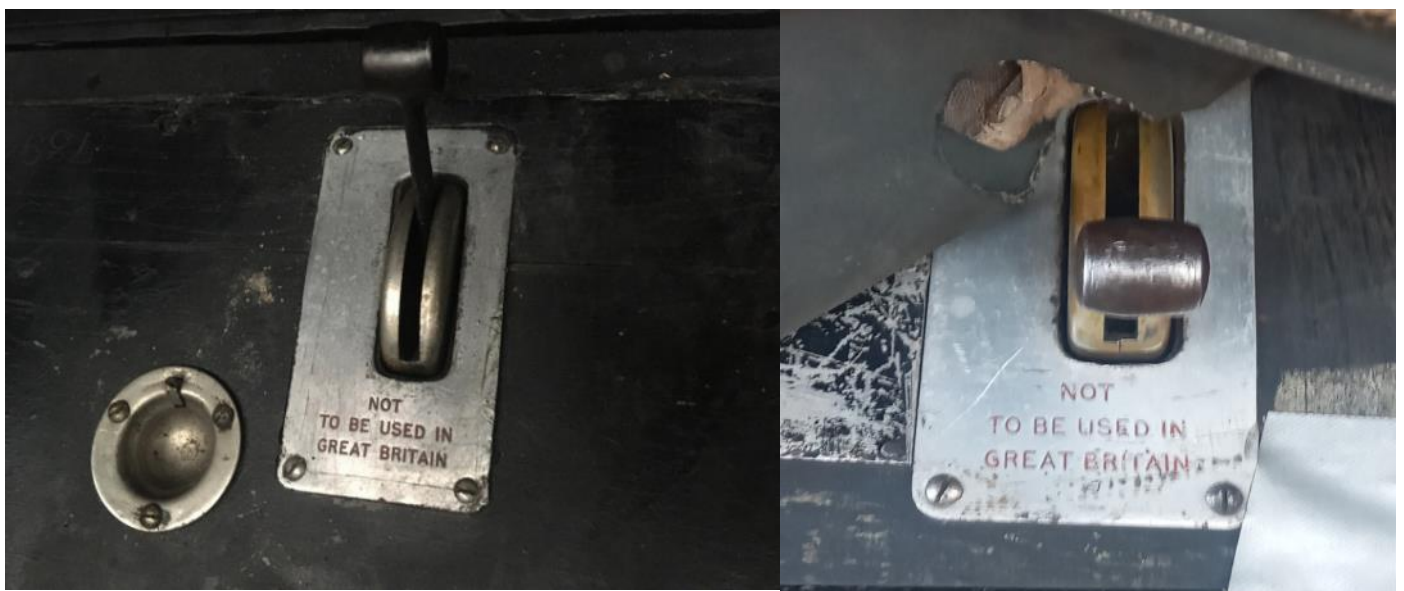
NOT TO BE USED IN GREAT BRITAIN

This is a notification engraved in red letters on a plate, next to the kick pedal, on the floor of my PII. It opens an exhaust cut-out to by-pass the silencer.

Opening it produces an awful rumbling and vibration under the back seat. Cries of 'we are in Great Britain close that dam thing'. All very un-Rolls-Royce like.

The puzzle is why did Rolls-Royce fit a beautifully made device of 16 parts then instruct you not to use it? I have never found any written information about the fitment, reasons, or use of the cut-out.

At a steady 70mph opening the cut-out resulted in immediate reduction in water temperature from 76 degrees to 70 degrees before the radiator shutters responded restoring the temperature to 76 degrees.



I am not sure which pre-war cars Rolls fitted it to. I have seen it on Ghosts PI and some PII's. it was on my PII not as an extra but a standard fitting. Over the years I have kept the cut-out operational, but the time has now come to refit the butterfly flap valve. Corrosion and erosion are causing it to leak audibly, the outer edges were built up with brass (see photos). I pity the poor draughtsman tasked with the drawing of the interconnecting array of ARCS ellipses and bevels of the shape of the butterfly, Impossible but a sharp file and patience did the job of restoring the fit.



I have now replaced the original fishtail and tail pipe with twin 1 ½" tail pipes opening and closing the cut-out now makes little or no difference to water temperature.

This begs the question, is the reason for the exhaust cut-out to relieve the back pressure created by the fishtail and why was the fishtail ever fitted?



I have a PII the same age as Rogers, but my car does not have this by-pass valve, but it's not a "Continental", so did all "Continental" Phantoms have this by-pass valve? The answer is no, it was an optional extra for "Continental" cars.



The Bentley EWB is now on sale



The Bentley Bentayga EWB is now in production at their Crew factory.

Only one engine option for the Bentayga EWB. It is a twin-turbocharged 4.0-liter V8 engine, an amazing 542 horsepower. Despite its size, the stretched SUV reaches 100 kilometres per hour in just 4.5 seconds, and a top speed of 180 mph.

In terms of dimensions, the Bentayga EWB is 10 feet 5 inches longer than the standard model. Customers can have the car in either a standard five-seat, or an exclusive four-seat configuration with two captain's chairs. I very much like the idea of the two captain's chairs with all that room.

Newsletter Editor's Comments.

With the help of the section members, I would like to continue adding technical articles into the Newsletter. We have a wealth of talent and knowledge within the membership of the North East Section. If you could send me a picture with some associated words, it would be greatly appreciated. Any comments positive or negative, suggestions, all taken on board.

We have lots of members that own non-RR or Bentley classic cars. There is now a section in the Newsletter where that car could be featured in: members "The Other Woman",

If readers have any ideas, comments, articles, or pictures of their, "Other Woman", please contact me by e-mail on: petercharlton1@yahoo.com



Do not run foul of the law.

Loud music.

Many people like to crank up the stereo and indulge in some sub-par singing while driving, but while there's no direct law against loud music (or being tone deaf), it is deemed a distraction, a £100 fine and three points could be handed out. What's more, if you are stationary, local authorities can issue you with a noise abatement notice. If you're asked to turn the music down and refuse, your car could be seized.



Disco Bentley.

Picture on the right: At the time, the pinnacle of car entertainment in the 1930's Your very own record turn able.



During a recent visit to the Faroe Islands, I noticed a very good idea. Their taxis have car registration number plates with the word "Taxi" on it followed by a number. With this method, no matter what colour the car is, you know at a glance that the vehicle is a taxi. This method of registration stops "fake" taxis from illegally plying for business.

For Sale or Wanted.

For Sale:

20HP, 20/25 and Phantom engine linkages. Offers. E-mail: petercharlton1@yahoo.com

20/25 Starting motor. Overhauled running well. £350. Phone: 01429 421841

20/25 Ace Wheel discs for sale. £30. Phone 01429421841

Silver Shadow tool box, £150. Phone: 01429421841.

Auto-Vac gaskets. Pair of top gaskets £9.99, fuel switch gasket £7.99. All £2 p&p.
petercharlton1@yahoo.com

Pre-War Rolls-Royce ammeter gauge. £275 Phone: 07906068622



For Sale: 1934 Rolls-Royce 20/25 Hooper 2 door Coupe. One off designed car, overdrive fitted. Phone 01642551835 or further details on "Trade Classics" [1934 Rolls-Royce 20/25 Coupe by Hooper](http://1934RollsRoyce2025CoupebyHooper.tradeclassics.com) (tradeclassics.com)



Bentley Mulliner: Perfect condition, originally supplied by Jack Barclay. £80000 ovno. Contact H. Tones. Oxford Road, Hartlepool.

WANTED:

20HP Radiator, must be in good condition. Phone, 07906068622

Any RR or Bentley Bakelite electrical fittings and junction boxes 01429 421841

20/25 Temperature gauge complete with bulb. 07906068622.

20HP Starter solenoid. 01429421841.

Pre-war floor mounted dip button. Phone: 01429421841.

A good 20/25 Cylinder Head and Block Wanted. Phone: 01429421841.

The two Silver Cloud combination spanners, Phone 01429421841.

Members Other Woman



1955 AC Ace owned by Francis Dodd. The car has an AC straight six cylinder 2.6 litre engine, that produces around about 100 brake horsepower. The car is fitted with overdrive.



Freddie Mercury's 1974 Silver Shadow sold for more than a quarter of a Million at Sotheby's Auction

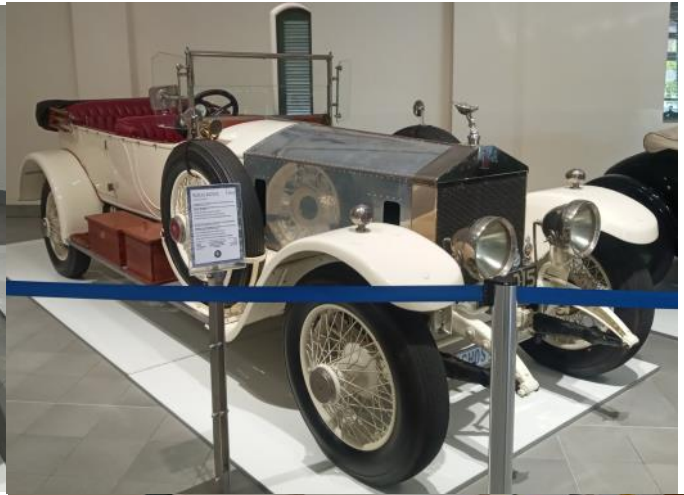
Quiz Answers:

- 1/. Wraith
- 2/. Springfield Ghost.
- 3/. Late Ghost.
- 4/. PI .
- 5/. PIII.
- 6/. PII.
- 7/. 20HP.
- 8/. 20/25.
- 9/. Early Ghost
- 10/. Cloud I.
- 11/. 25/30
- 12/. Silver Wraith.

Freddie Mercury's 1974 Silver Shadow sold at Sotheby's Auction at Marlborough House on Saturday 5th. November, for what must surely be a world record price for a Silver Shadow , sale price £286,250 inclusive of the premium.

SRH18696, registered WLY 293M, has covered very few miles in the last 16 years - only 62,373 miles currently showing on the odometer and the 2006 MOT certificate recorded 61,879 at that date. In 2012, the reading was 62,356 so just 17 miles in the last decade.

Unfortunately, the cast does not stop there. The recommission will no doubt cost the true value of a car, of that age.



I saw some fantastic cars on a recent trip to South Africa.



In a motor museum in Franschhoek just outside Cape Town there is a fantastic collection of cars that I have never seen before. Their collection consists of Silver Ghost, 20/25. Phantom II and a 3/4 1/2 Bentley. On the roads being used as everyday cars, the above coach built Silver Cloud. A standard and coach built Silver Shadow.



Flying Spares

New | Reconditioned | Recycled
www.flyingsparses.com



Worldwide suppliers of quality post-War Rolls-Royce and Bentley parts



Discount for
all RREC Members

Tel: 01455 292949 | Email: sales@flyingsparses.co.uk | Fax: 01455 292959

John Duckworth Funeral Directors

Telephone 0191 516 0202

All areas covered

Four generations serving our local community

Licensed funeral directors

Award winning funeral directors





Christmas dinner at the Old Mill, Metal Bridge.



Left: Allan presenting Francis with a beautiful bouquet of flowers.



Staff at Metal Bridge excelled. What a fantastic evening.



Roger doing his Christmas members welcome address.





Christmas Dinner cont.



Pauline and Janet enjoying their evening.



A fantastic turnout of section members and friends, 34 in total. Had a splendid evening and meal.



Francis still surprised to receive the bouquet of flowers from Allan.



A Rolls Royce Ambulance presented to St. Andrew's Ambulance Association. When the Joint Ambulance Committee of the Association and BRCS contracted in 1948 to provide the NHS with an ambulance service, the Scottish Home and Health Department provided new or replacement vehicles. Ambulances transferred from both voluntary societies had a value placed on them according to a set formula resulting in several Rolls Royce vehicles being valued at 2/6p (12.5p)

PHANTOM I AMBULANCE



Two years ago, in the middle of the Covid pandemic, I featured a Rolls-Royce based ambulance on the front cover of the October Newsletter. Recently, I received an inquiry about the car from a Dutch gentleman. He wanted to know further details about the car. I contacted the late Bernard King and with help from other club members, the ambulance was hopefully identified from that very poor quality newspaper cutting. The car was thought to be a: 1926 Rolls-Royce Phantom I. Chassis number 46LC.

46LC has had several bodies on her chassis during her life. She started off with a Harrison landalette body. She now fitted with a barrel tourer body.

It is fascinating how the car has been used during its life. Firstly, used for conventional transport and then during the war period it was adapted to an ambulance to assist in the war effort. After the war, the car was converted back to conventional transport with a different more fashionable open bodied tourer.



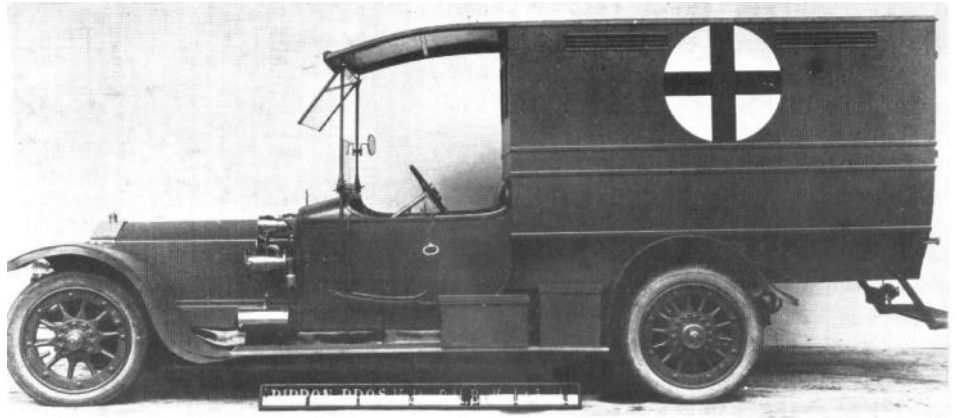
The first owner Mr H K Bibby a City man who worked in finance. The chassis was made in 1925 and delivered in February 1926 with 3/4 Landaulet body by Offord and Sons. London coachbuilders Offord, renovated the Coronation Coach in 1952/53. Herbert K Bibby died in December 1927 aged 83, so he was at an old age to buy a new car, but I'm sure he had a chauffeur for that heavy steering!

The next owner was Col. Ewing Crawford who lived at The Castle, Duchray Perthshire, which is now a hotel.

Strangely the car has a Ghost petrol tank cap for a pressurised system despite having an AutoVac. It is an early Phantom 1 but it seems unusual that Sir Henry would not have made a more modern and simpler cap. The car was also fitted with a Cobra wind horn, scuttle mounted sidelights and black radiator shutters when new. Nothing left of them today. But, the Ewart wheel discs still survive. The later record cards showed it was receiving parts sent to Scotland until 1938. It is likely that the ambulance body was fitted near the beginning of the war and ownership changed.

Present owner: Tim Corbishley, a Wessex section member. Thanks to him for the recent picture and up to date information.

More Rolls-Royces re-bodied and then used as ambulances during the war.



One car was converted into a mobile dentist.

When you think, during the war there would have been a need for a mobile dentist to visit factories and bomb sites.

